



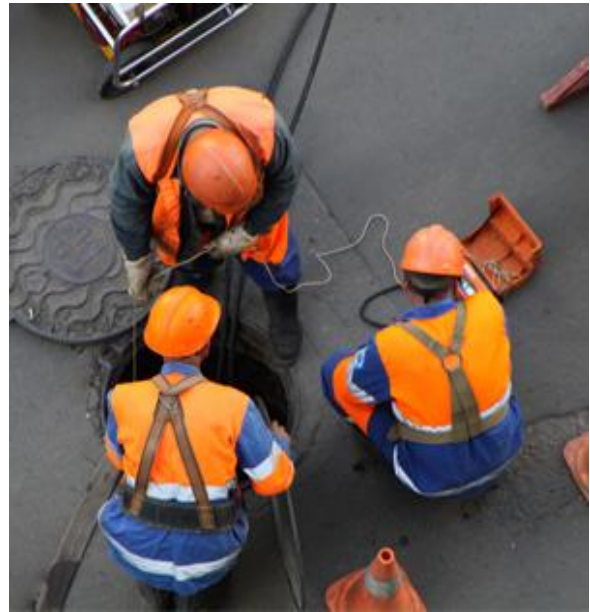
## Confined and Enclosed Spaces

### CONFINED AND ENCLOSED SPACES AND CORRECTIVE ACTIONS

Confined space entry is a safety critical task because of the hazards that are associated. The following are some of the hazards of confined space entry: Oxygen deficiency/enrichment; Exposure to Toxic and Flammable Chemicals; Extreme Temperatures; High Noise Levels; Wet Surfaces; and Falling Objects.

#### Near Misses and Corrective Actions

Hazards	Corrective actions
Equipment Faulty/Missing/Inadequate	1) Increase Inspection Frequency 2) Maintenance Training 3) Confined Space Procedure Training
Improper Procedure	Confined Space Procedure Training
No Entrance Permit	Confined Space Procedure Training
No PPE or PPE Faulty	Safety Procedure Training



#### Injuries and Corrective Actions

Cause	Corrective Actions	Most Common Injury Type
Ignoring Safety Practices	Safety Procedure Training	Injuries ranging from light to serious
Entering confined space without obtaining a permit, inspection, or testing	Confined Space Procedure Training	Multiple Deaths occurred but injuries ranging to light
Lack of Situational Awareness	Situational Awareness Training	Injuries ranging from light to serious



The material in this document is provided for informational purposes only and not as a comprehensive or exhaustive resource on this topic. This material has been compiled from a multitude of sources believed to be accurate. In no event does the content of this document supersede any applicable local, state or federal statutes or regulations.